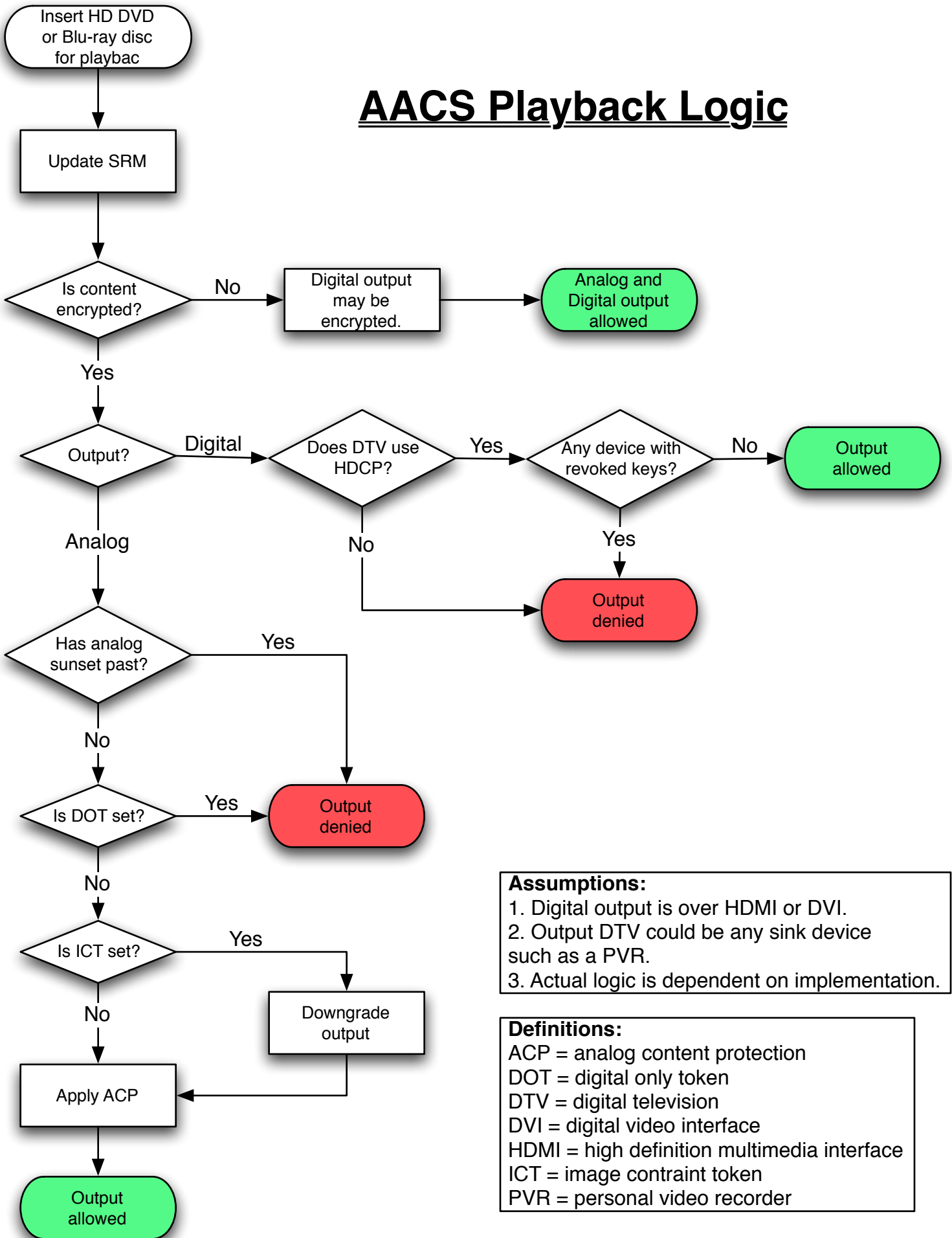


AACS Playback Logic



Assumptions:

1. Digital output is over HDMI or DVI.
2. Output DTV could be any sink device such as a PVR.
3. Actual logic is dependent on implementation.

Definitions:

ACP = analog content protection
DOT = digital only token
DTV = digital television
DVI = digital video interface
HDMI = high definition multimedia interface
ICT = image constraint token
PVR = personal video recorder